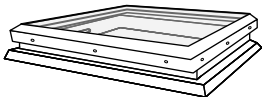
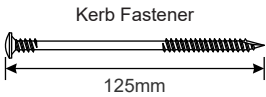



Flat Glass

TB402

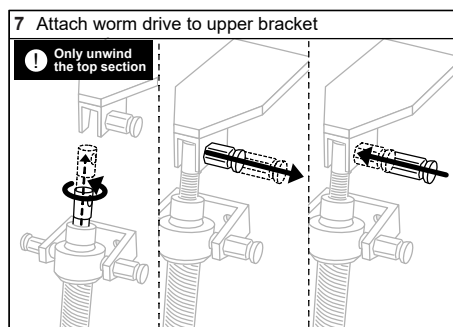
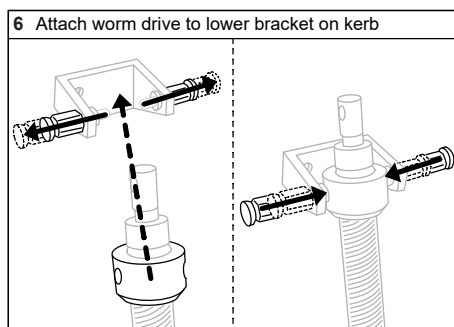
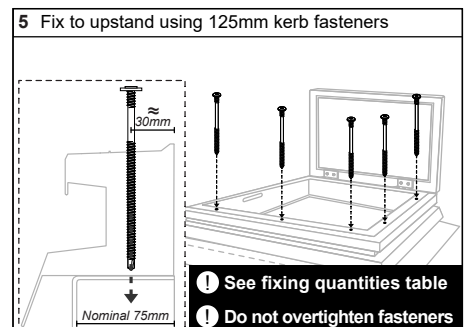
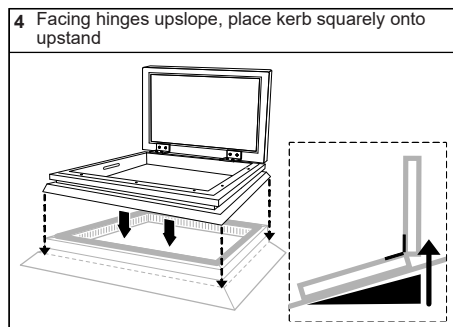
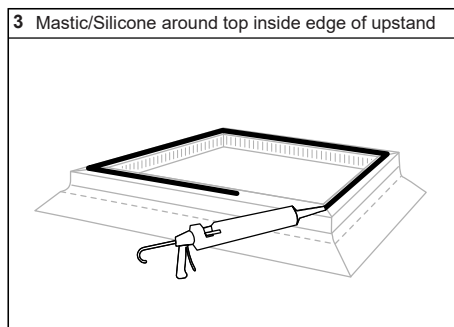
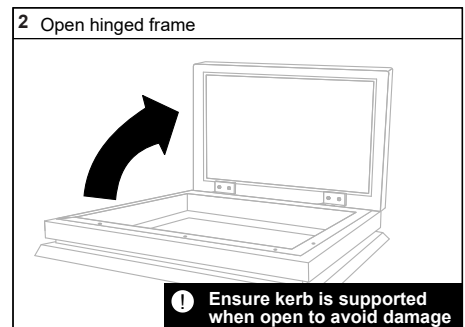
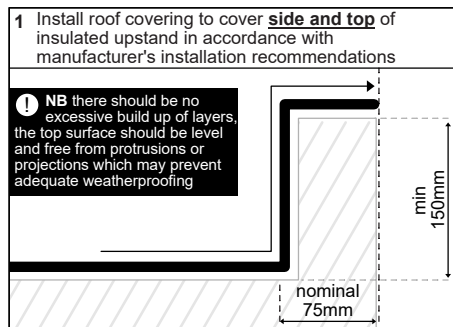
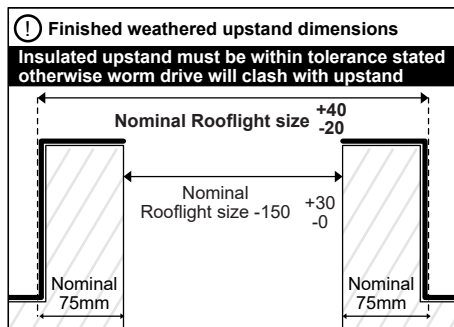
Manual Opening Flat Glass Rooflight on builders upstand

Contents	⚠ Take care when unpacking	✓ Check all correct parts are included and undamaged	🔧 Only use fixings supplied																
 <p>Flat Glass Rooflight</p>	 <p>Kerb Fastener 125mm</p>	 <p>Worm Drive</p>	<table border="1"> <thead> <tr> <th>Kerb</th> <th>Fixing Quantities</th> </tr> <tr> <th>Length of Nominal Unit Side (mm)</th> <th>Number of fixings per side</th> </tr> </thead> <tbody> <tr><td>750 and under</td><td>2</td></tr> <tr><td>751 to 1200</td><td>3</td></tr> <tr><td>1201 to 1650</td><td>4</td></tr> <tr><td>1651 to 1950</td><td>5</td></tr> <tr><td>1951 to 2250</td><td>6</td></tr> <tr><td>2251 to 3000</td><td>7</td></tr> </tbody> </table>	Kerb	Fixing Quantities	Length of Nominal Unit Side (mm)	Number of fixings per side	750 and under	2	751 to 1200	3	1201 to 1650	4	1651 to 1950	5	1951 to 2250	6	2251 to 3000	7
Kerb	Fixing Quantities																		
Length of Nominal Unit Side (mm)	Number of fixings per side																		
750 and under	2																		
751 to 1200	3																		
1201 to 1650	4																		
1651 to 1950	5																		
1951 to 2250	6																		
2251 to 3000	7																		

⚠ All Health & Safety Regulations must be followed on site throughout the installation process

⚠ WARNING! Flat glass units are heavy. Some units may require a mechanical lift.

Glass Unit	Fixing Quantities
Length of Nominal Unit Side (mm)	Number of fixings per side
899 and under	2
900 to 1500	3
1501 to 2000	5
2001 to 2500	7
2501 to 3000	9
3001 to 3600	11



⚠ **TECHNICAL SUPPORT:** For any technical information/queries please contact your supplier. The manufacturer operates a policy of continuous product improvement, and reserves the right to alter specifications at any time without notice. Every effort has been taken to ensure all details contained in this document are correct at the time of going to press but this document should be used only as a guide and does not in any way form part of a contract or warranty. It is the customer's responsibility to ensure that the product is suitable for the actual conditions of use, which are beyond the control of the manufacturer.

**SCAN FOR
INSTALLATION
VIDEO**

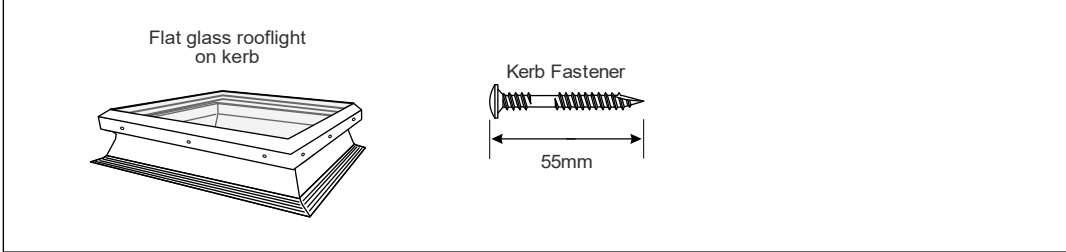


Flat Glass

TB402

Manual Opening Flat Glass Rooflight on PVC kerb

Contents **!** Take care when unpacking **!** Check all correct parts are included and undamaged **!** Only use fixings supplied



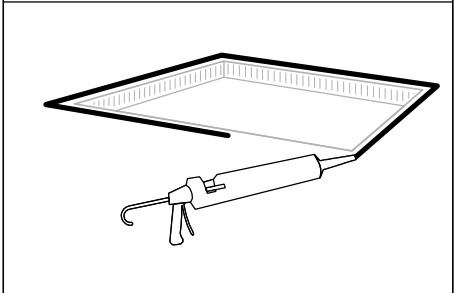
Kerb	Fixing Quantities
Length of Nominal Unit Side (mm)	Number of fixings per side
750 and under	2
751 to 1200	3
1201 to 1650	4
1651 to 1950	5
1951 to 2250	6
2251 to 3000	7

! All Health & Safety Regulations must be followed on site throughout the installation process

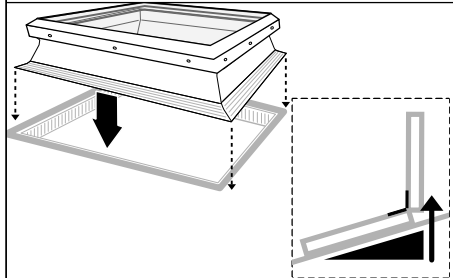
! **WARNING!** Flat glass units are heavy. Some units may require a mechanical lift.

Glass Unit	Fixing Quantities
Length of Nominal Unit Side (mm)	Number of fixings per side
899 and under	2
900 to 1500	3
1501 to 2000	5
2001 to 2500	7
2501 to 3000	9
3001 to 3600	11

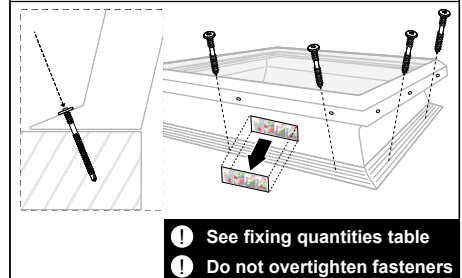
1 Mastic/Silicone around the edge of the roof opening



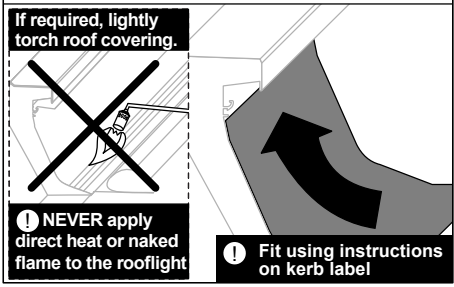
2 Facing hinges upslope, place kerb squarely over roof opening



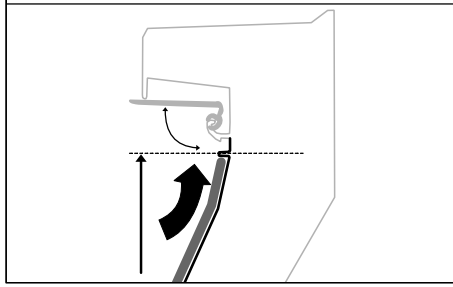
3 Fix kerb to roof using 55mm kerb fasteners **Remove and retain label**



4 Install roof covering according to manufacturer's installation recommendations



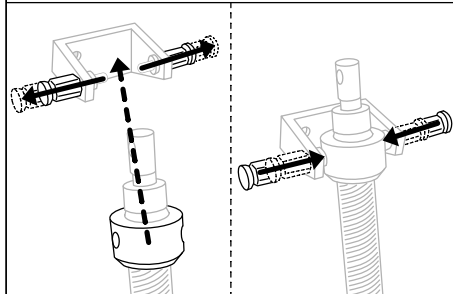
5 Terminate roof covering in accordance with instructions on retained kerb label



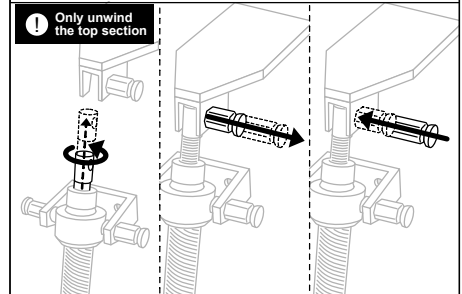
Product is supplied assembled and locked shut.

The following is for information only.

i Attach worm drive to lower bracket on kerb



i Attach worm drive to upper bracket



! **TECHNICAL SUPPORT:** For any technical information/queries please contact your supplier. The manufacturer operates a policy of continuous product improvement, and reserves the right to alter specifications at any time without notice. Every effort has been taken to ensure all details contained in this document are correct at the time of going to press but this document should be used only as a guide and does not in any way form part of a contract or warranty. It is the customer's responsibility to ensure that the product is suitable for the actual conditions of use, which are beyond the control of the manufacturer.

